

## Decree

### *Clarifying the Boundaries of St. Ambrose Parish Baltimore, Maryland*

In light of the *Seek the City to Come* pastoral planning process, I hereby define the boundaries of St. Ambrose Parish in Baltimore as established by the attached detailed map of the area.

This decision is made having properly consulted with all parishes involved as well as the members of the Presbyteral Council who unanimously approved these changes.

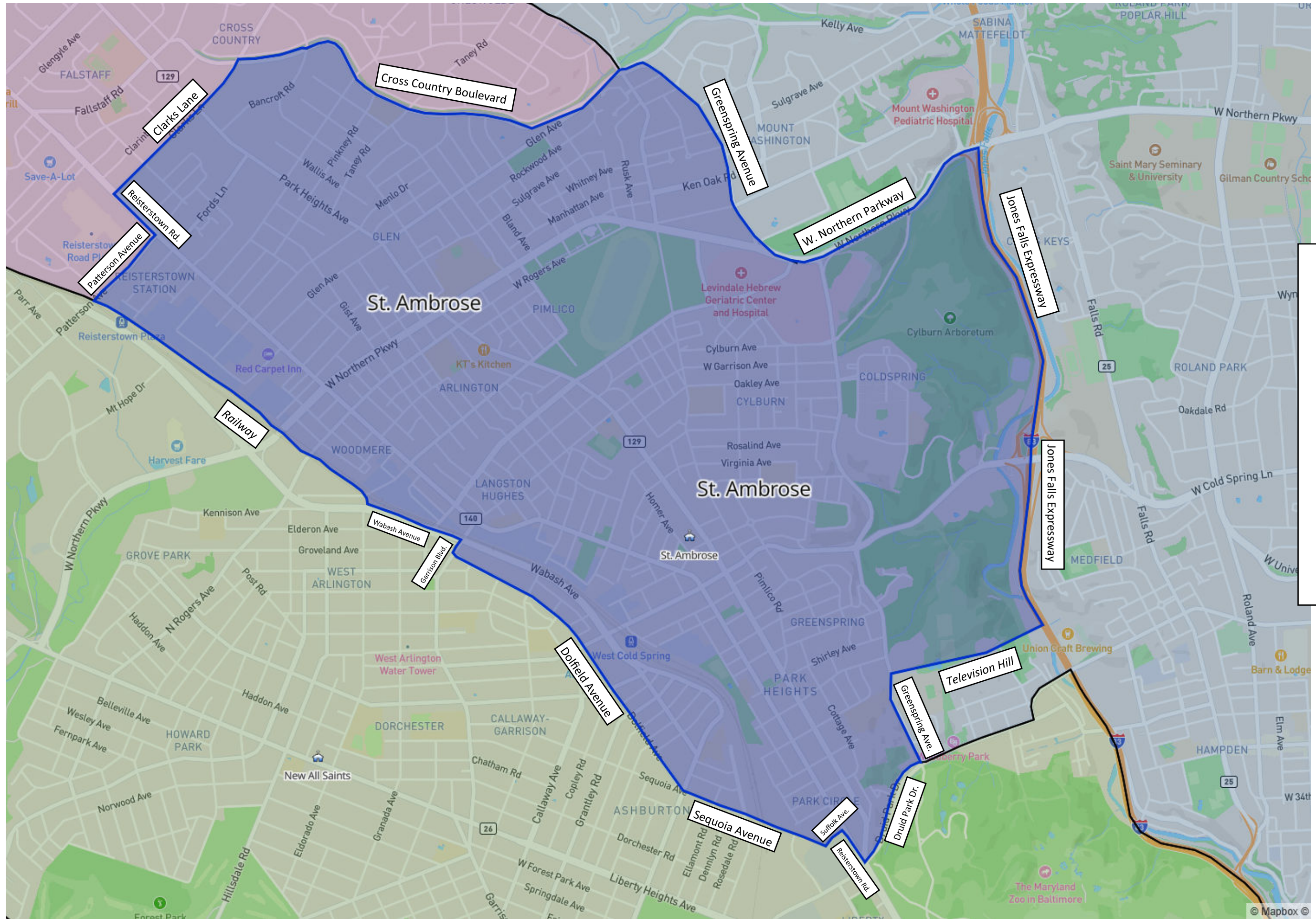
This decree is effective July 1, 2026, anything to the contrary notwithstanding.

Given at the Chancery of the Archdiocese of Baltimore in Baltimore, Maryland, on this 18<sup>th</sup> day of June, 2026.

Most Reverend William E. Lori, S.T.D.  
Archbishop of Baltimore

Dr. Diane L. Barr, J.D., J.C.D., Ph.D.  
Chancellor





# St. Ambrose