

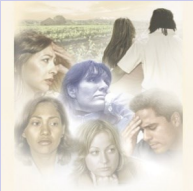


## PREGNANT? ALONE?

Gabriel Network  
(800) ANGEL-OK

www.gabrielnetwork.org  
Providing practical, emotional  
and spiritual assistance to  
women and families facing  
crisis pregnancies, in a spirit of  
Christian solidarity.

## SUFFERING AFTER ABORTION?



Project Rachel  
Baltimore  
410.625.8491

projectrachel@archbalt.org

www.project-rachel.net  
Providing special healing retreats  
and a referral network of clergy  
and counselors for those suffering  
after involvement with abortion.

### Local pregnancy centers offer:\*

- FREE pregnancy tests
- Sonograms
- STD testing
- Maternity clothes
- Confidential counseling
- Clothes for your baby
- Diapers, wipes, and supplies
- Cribs and mattresses
- Baby formula
- Housing
- Transportation
- Parenting classes
- Prenatal vitamins
- Referrals
- Post-abortion grief counseling
- Se habla Español

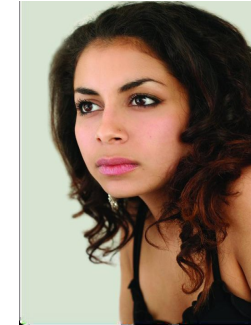
Services and supplies vary by center.  
Centers that provide some medical  
services are marked with an \*.  
Se habla espanol ^.



Last updated July 2016

(410) 547-5537 • life@archbalt.org

# Pregnant?



You have  
**REAL**  
**CHOICES.**

No woman need choose abortion.

## We can help.

*And I pledge more. No one has to  
have an abortion. To all of those in  
crisis pregnancies, I pledge our sup-  
port and our financial help. Come to  
the Catholic Church. Let us walk  
with you through your time of trou-  
ble. Let us help you affirm life. Let us  
help you find a new life with your  
child, or let us help you place that  
child in a loving home. But please, I  
beg you: let us help you affirm  
life. Abortion need not be an  
“answer” in this Archdiocese.*

*- Cardinal Edwin O'Brien,  
Archbishop Emeritus*

Allegany County

**1<sup>st</sup> Way Pregnancy Center** 301.777.1261  
<http://1stwaypregnancy.org/>  
310 Race St., S Cumberland, MD 21502

Anne Arundel County

**Birthright of Annapolis<sup>^</sup>** 410.384.7700  
[www.stmarysannapolis.org/birthright](http://www.stmarysannapolis.org/birthright)  
269 Peninsula Farm Rd. (Suite A)  
Arnold, MD 21021

**Mary's Center** 410.761.8082  
<http://maryscentermd.org/>  
7567 Ritchie Highway, Glen Burnie 21061

**Pregnancy Clinic** (3 locations)

<http://pregnancyclinic.org>  
**Severna Park\*** 410.431.5000  
650 Ritchie Highway, Suite 307, 21146  
**Bowie-Crofton\*** 301.262.1330  
4341 Northview Drive, Bowie, MD 20716  
**Annapolis\*** 410.295.3839  
934 West St., Annapolis, MD 21401

Baltimore City

**Ctr. for Pregnancy Concerns** 410.391.3911  
[www.cpcforhelp.org](http://www.cpcforhelp.org)  
**Baltimore<sup>^^</sup>**  
528 East 22nd Street, Baltimore 21218

Baltimore County

**Alpha Pregnancy Center\*** 410.833.7793  
[www.alpha-pregnancycenter.org](http://www.alpha-pregnancycenter.org)  
301 Main St., Ste.1B, Reisterstown, 21136

**Women's Care Center<sup>^^</sup>** 667.401.0700  
[www.womenscarecenter.org](http://www.womenscarecenter.org)  
7625 Belair Road, Baltimore, MD 21236

**Center for Pregnancy Concerns** (3 locations)  
[www.cpcforhelp.org](http://www.cpcforhelp.org) / 410.391.3911  
**Dundalk<sup>^^</sup>**  
2907 Dunleer Rd., Dundalk, MD 21222  
**Essex\***  
442 Eastern Blvd., Essex, MD 21221-6714  
**Arbutus**  
5406 East Dr., Arbutus, MD 21227

**Pregnancy Center North<sup>^^</sup>** 410.377.2871  
<http://pcnorth.org/>  
6805 York Rd., Baltimore, MD 21212

**Pregnancy Center West<sup>^^</sup>** 410.788.4433  
[www.pregnancycenterwest.org](http://www.pregnancycenterwest.org)  
5411 Old Frederick Rd., #1, Baltimore 21229

Carroll County

**Tender Care Pregnancy Ctr<sup>^^</sup>** 410.848.8289  
<https://tendercare.org/>  
95 Carroll Street, Suite 101  
Westminster, MD 21157

Frederick County

**Birthright of Frederick** 301.663.0111  
[www.birthright.org](http://www.birthright.org)  
250 W. Patrick St., Frederick, MD 21701

**CareNet Pregnancy Center of Frederick\***  
[www.carenetfrederick.org](http://www.carenetfrederick.org) 301.662.5300  
707 N. Market St., Frederick, MD 21701

**Catoctin Pregnancy Center** 301.447.3391  
[www.catoctinpregcenter.org](http://www.catoctinpregcenter.org)  
502 E. Main St., Emmitsburg, MD 21727

Charles County

**Catherine Foundation** 301.932.8811  
[www.catherinefoundation.org](http://www.catherinefoundation.org)  
3065 Old Washington Rd., Waldorf 20601

Harford County

**Alpha's Glory Pregnancy Ctr** 410.272.4711  
<http://aberdeenprc.org/>  
219 W. Belair Ave., Ste 2 Aberdeen 21001

**Birthright of Harford County** 410.838.0443  
<http://birthrightharfordcounty.org/>  
38 E. Gordon St., Bel Air, MD 21014

Howard County

**Columbia Pregnancy Ctr<sup>^^</sup>** 410.730.3223  
<http://columbia-pregnancy.org>  
10632 Little Patuxent Pkwy, Suite 254  
Columbia, MD 21044

**Laurel Pregnancy Center\*** 301.776.9996  
[www.laurelpregnancycenter.org](http://www.laurelpregnancycenter.org)  
415 Main St., Laurel, MD 20707

Garrett County

**Mountain Top CPC\*** 301.334.1058  
314 South 2nd St., Oakland, MD 21550

Washington County

**Hagerstown Pregnancy Ctr\*** 301.739.8717  
[www.hapconline.com](http://www.hapconline.com)  
109 W. Baltimore St., Hagerstown 21740

**Hope Pregnancy Donation** 240.310.9720  
162 W. Washington St., Hagerstown 21740

**Mary's Center** 301.739.1234  
[maryscentermd.org/](http://maryscentermd.org/)  
1200 Dual Highway, Hagerstown, MD 21740

Call or check websites for  
current hours of operation.  
Many centers have weekend  
and evening hours.

