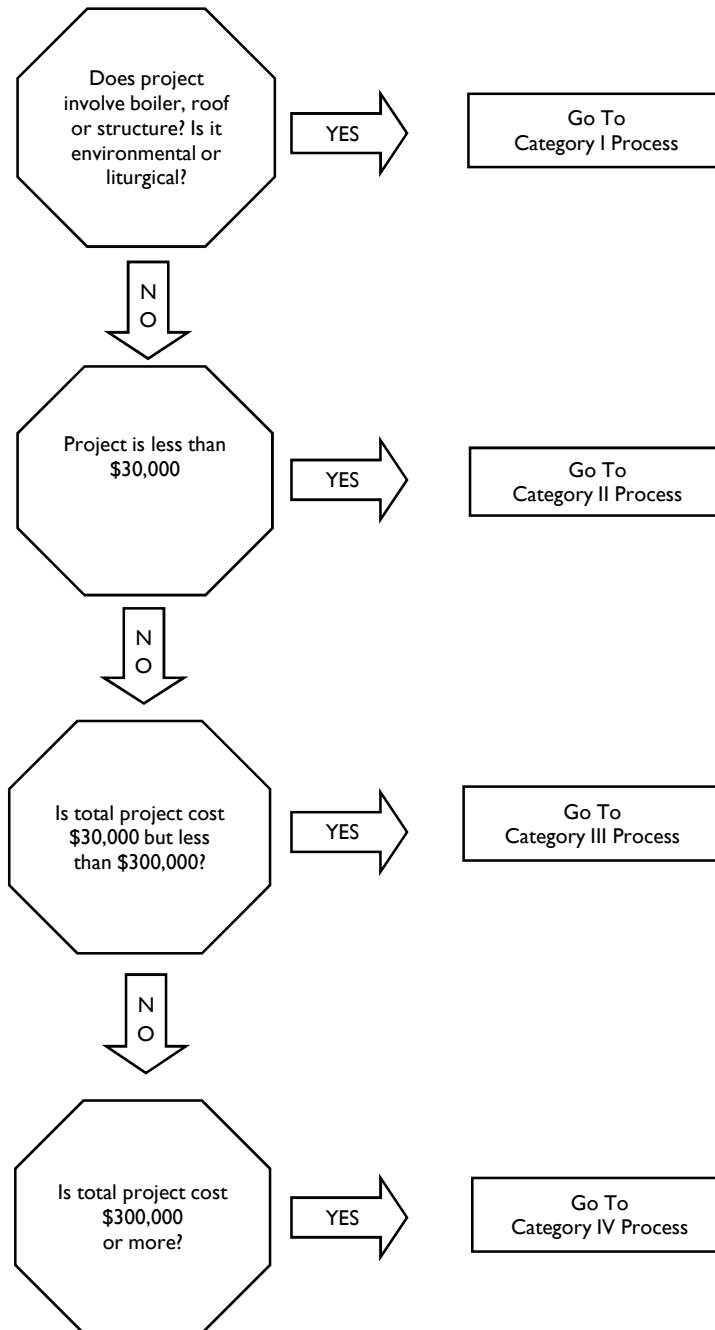




Archdiocese of Baltimore

CAPITAL PROJECTS FLOWCHART -- PROJECT SIZE



Capital Projects include all phases of any new construction or repair work involving the buildings, physical plant or facilities of a parish, school or other Archdiocesan-owned facilities.

Total Project Cost includes:

1. Total cost of design, consulting and construction;
2. Cost of all phases of an overall project or program, regardless of duration or scheduling.